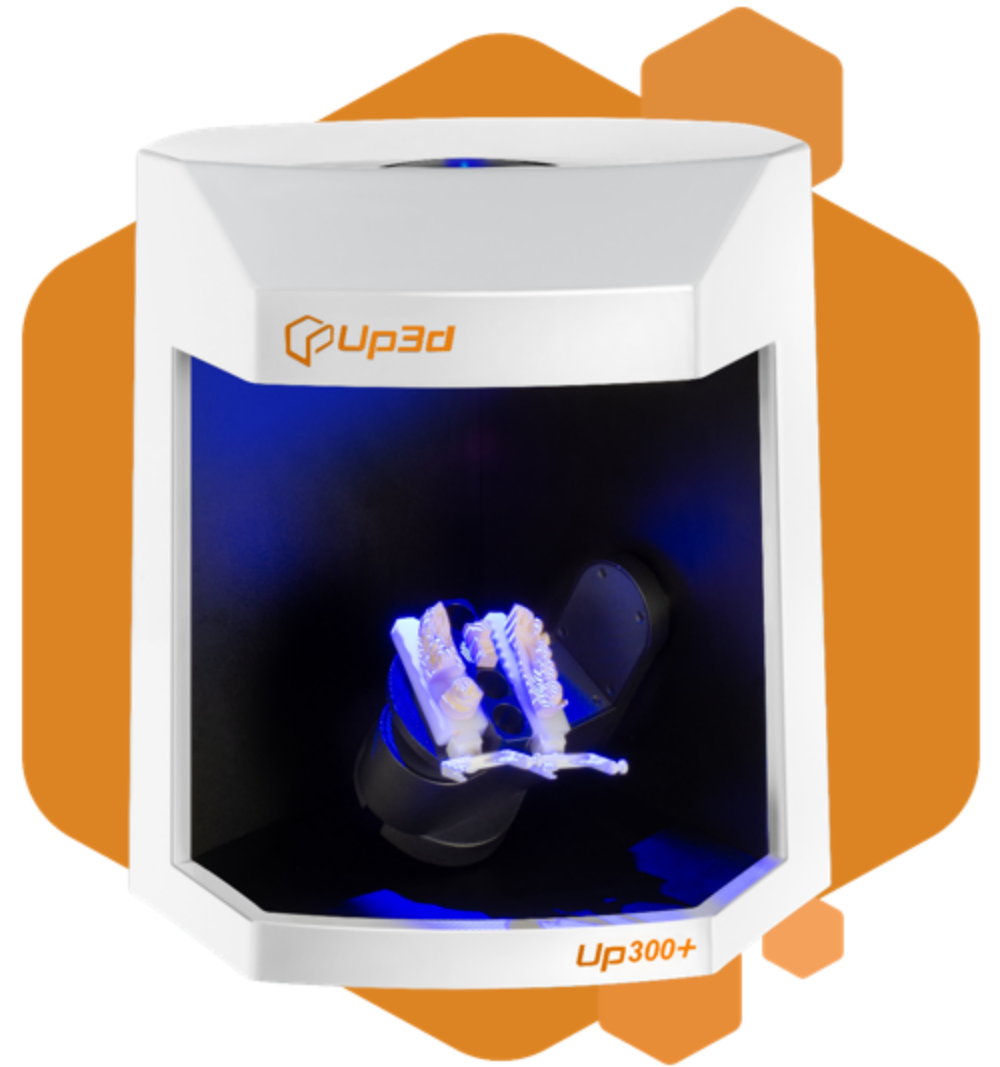
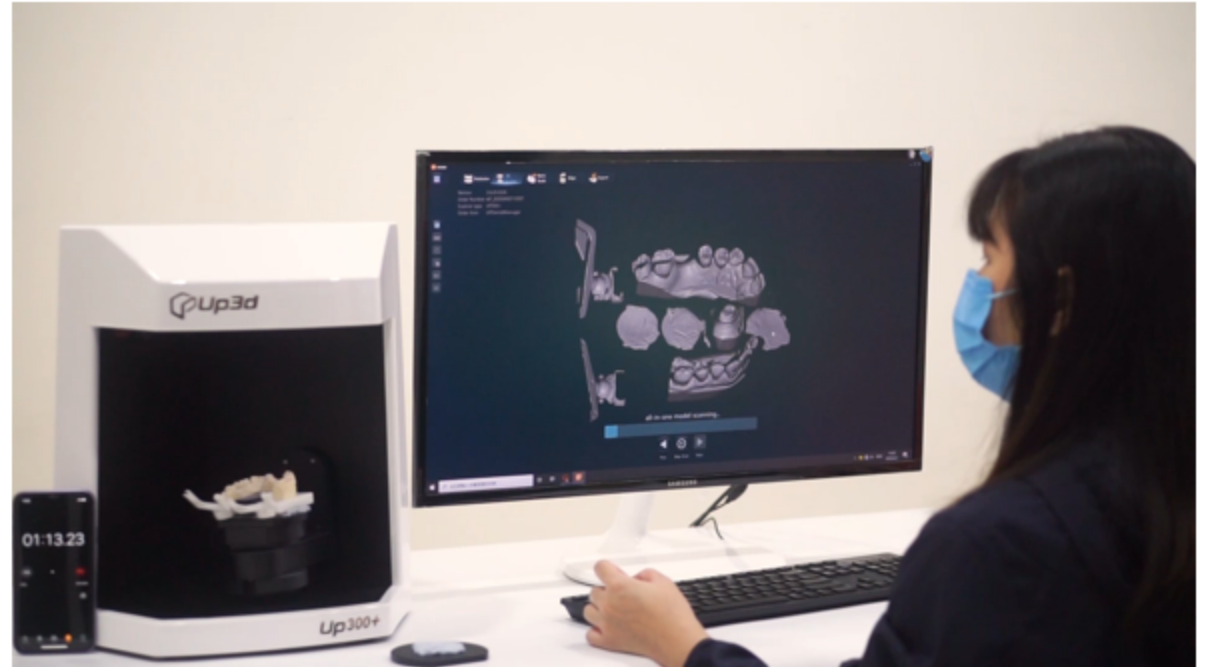


# Scanner **UP300+** USP





① All-in-one scan, Before 4 steps (occlusion-upper jaw-lower jaw-dies) to now 2 steps (occlusion-all-in-one scan).



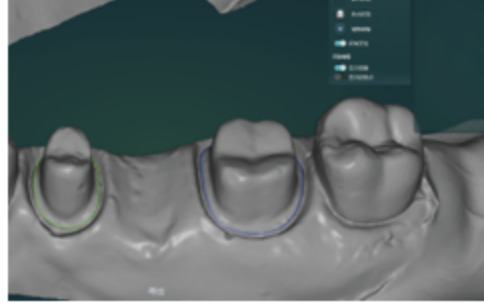
Fast speed, save up to 50% of scan time.

# USP :

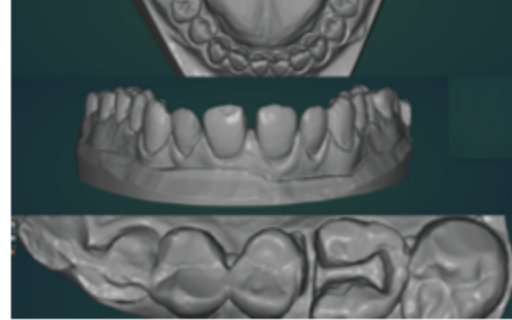


② Adaptable color projector. Scanning red and blue mark directly with one click.

You don't need to spray and add scan. Just one click change color light by UP360+.



③ Help dentists to mark margin line , they know the correct situation than technicians.



④ Veneer model, implant model, uncut model, and regular cut model, impressions.



⑤ Color texture scanning: it's good for orthodontic and remove denture.

# COMPETITIVE COMPARISON

Scanning type



Up3D



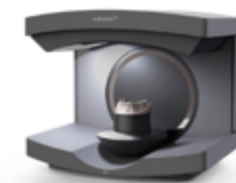
SHINING3D  
Go Digital with SHINING3D



DOF  
SCANS OF FREEDOM



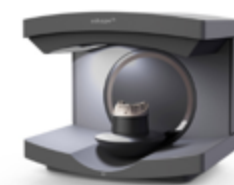
MEDIT



3shape

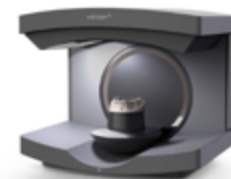
Model	UP300+	EX	EX-PRO	FREEDOM HD	UHD	EDGE	T300	T500	E1	E4
Triple tray	✓	✓	✓	✓	✓	✓	✓	✓	✓	✓
Scan triple tray	One click	Flip		Flip			Flip	Flip	Flip	Flip
Texture	Color	B/W	Color	B/W	B/W	B/W	Color	Color	✗	Color
Big Articulator(Virtual)	✓	✓	✓	✓	✓	✓	✓	✓	✓	✓
One step scanning implant with abutment screws	✓	✗	✗	✗	✗	✗	✗	✗	✗	✗
Mark margin in scan software	✓	✗	✗	✗	✗	✗	✗	✗	✗	✗
Multi-Dies	12	8	7	6	6	6	8	8	1	4
Dies placement	Free	In order		In order			In order		-	✗
Quadrant (All-in-one)	✓	✗	✓	✓	✓	✓	✓	✓	✗	✗
Multi-Color scan	✓	✗	✗	✗	✗	✗	✗	✗	✗	✗
Automatic alignment probability	99.9%	80%	80%	60% (scanning impression need to mark point bit manually)			70%	90%	90%	90%

Specification

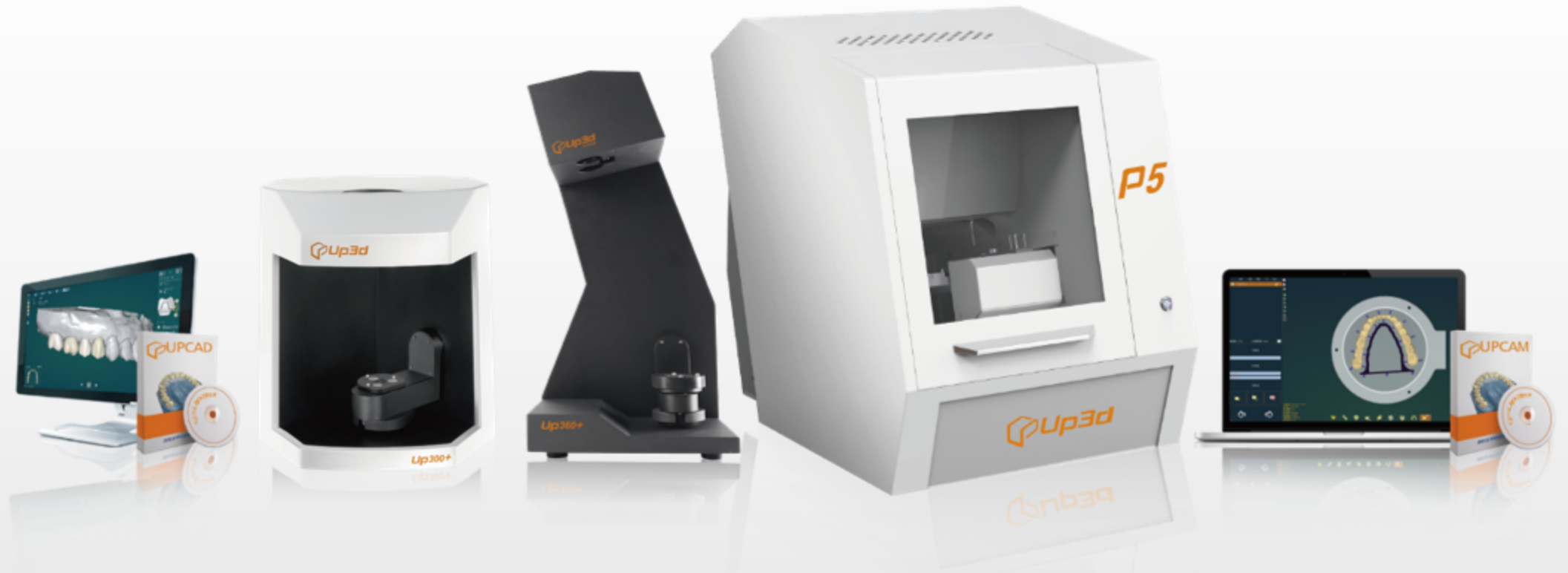


Model	UP300+	EX	EX-PRO	FREEDOM HD	UHD	EDGE	T300	T500	E1	E4
Precision(μm)	10	<13	≤10	10	10	10	-	7	10	4
Camera	2*130	2*130		2*200	2*500		2*130	2*130	2*500	4*500
Port	USB 3.0	USB 3.0		USB 3.0			USB 3.0		USB 3.0	
Technology	Structured blue light	Structured light		White LED			Structured blue light		Blue LED	
Output	STL,UM,PLY,OBJ	STL,PLY,OBJ		STL	STL	STL	STL	STL	STL	STL
One-click integration Design software	exocad Dental wings	exocad		exocad			exocad		3shape	3shape
Weight(KG)	10	5	5	17	17	13	12	12	16	16
Scanning scope(mm)	100*100*75	100*100*75		60*60*80		-	90*72*60		-	-
Minimum computer configuration	Window 7/10 ; NVIDIA, GTX1050, 4G ; Intel Core i7; Memory:8GB/16GB; USB 3.0 port ; 64bit;			Window 7/8.1/10 ; NVIDIA based graphics GTX- Intel Core i7/i5; Memory:8GB/16GB; USB 3.0 port ; 64bit;						

Scanning Time



Model	UP300+	EX	EX-PRO	FREEDOM HD	UHD	EDGE	T300	T500	E1	E4
Single impression	40s	120s	70s	2min30s	2min	1min	80s	90s	2min10s	45s
Full arch	20s	15s	15s	50s	50s	40s	24s	12s	22s	9s
Occlusion	3s (New way)	15s		20s	20s	15s	12s	12s	25s	10s
Dies	29s (12 units)	30s	15s	47s	1min	40s	35s	35s	20s	18s
Quadrant	37s	45s		2min	55s	52s	40s	45s	-	-
Triple tray	1min 10s	3min	1min 40s	2min 40s	3min 75s	2min	1min 50s	1min 58s	-	-



**Full dental CAD/CAM solution supplier**

THANKS FOR WATCHING



www.up3d.cn

info@up3d.cn

<https://www.facebook.com/up3dscan>

