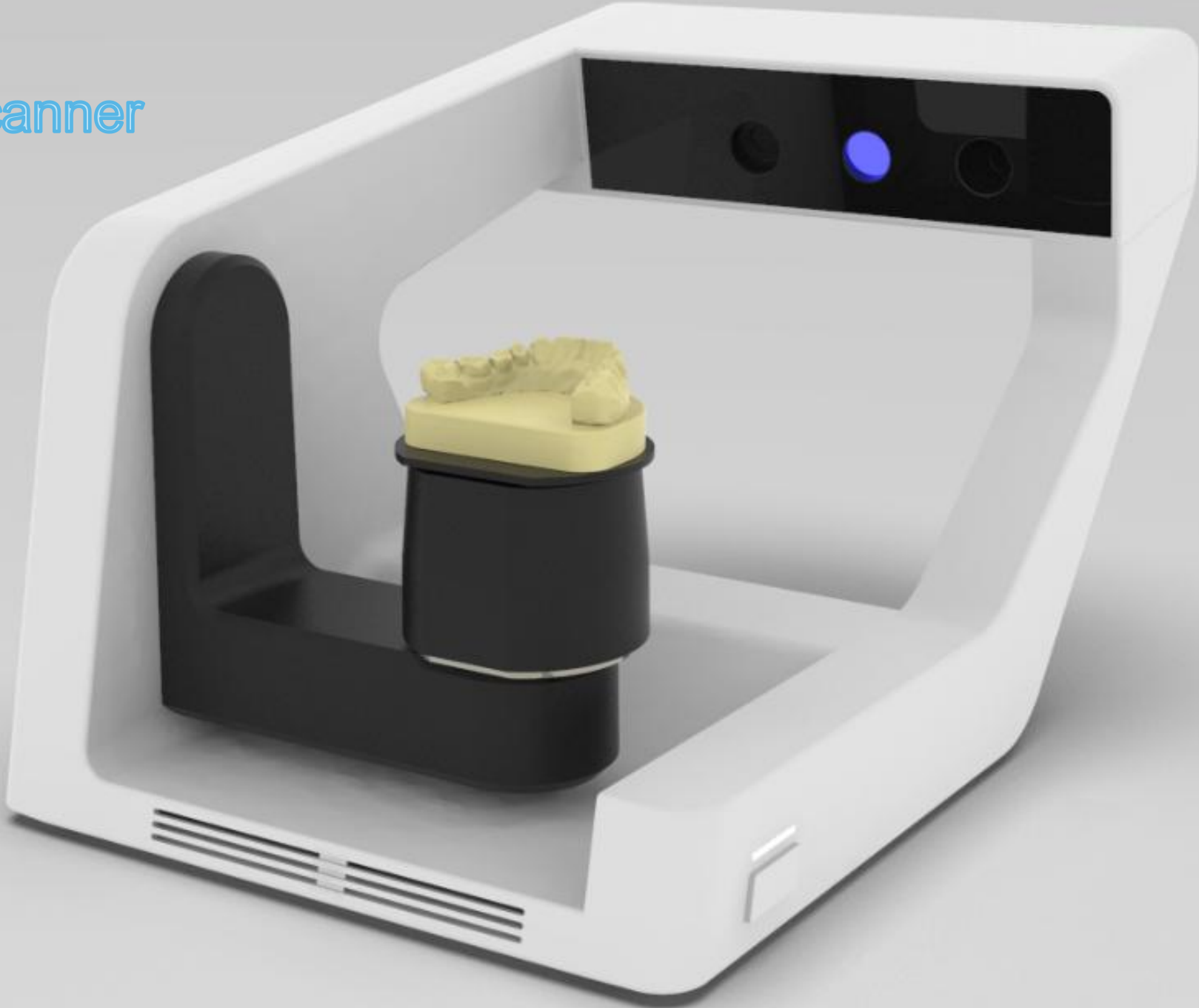
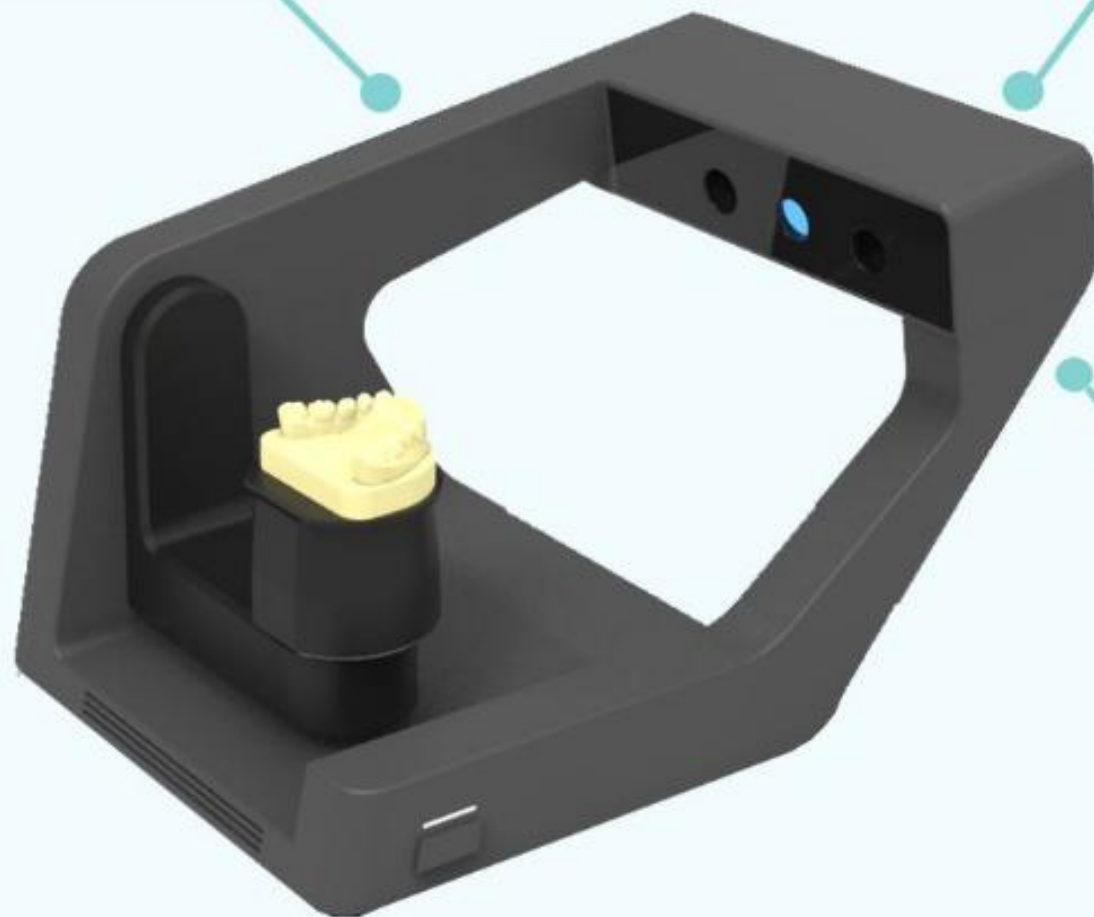


DX300 3D Scanner



Compared with the previous single arm structure, the double arm structure is not only more beautiful in shape, but also can make the structure more stable. The vibration of the motor during scanning is reduced, and the accuracy is effectively improved

The heat dissipation of projector adopts 2 heat sinkers and 2 air channels, that means half heat dissipation and double life, which completely solves the problem that most scanners on the market are prone to aging.

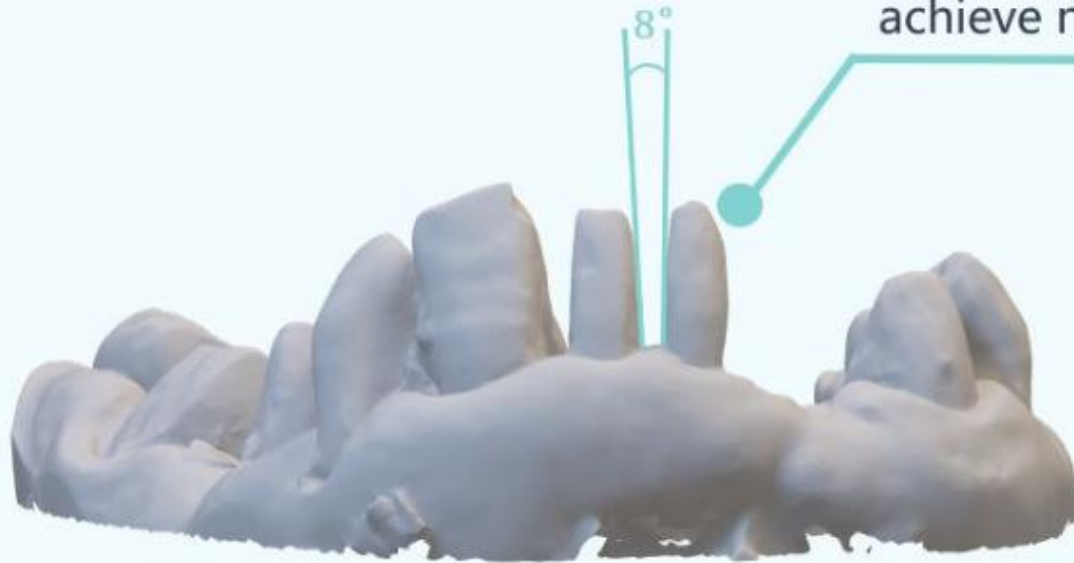


As large as 5.3um camera pixel, it can capture more image information and reflect more real details of the model.

The fastest dental scanner in China , 6S for single jaw, 9s for full arch, 9s for multi-die and 70s for impression.



Using the advanced algorithm, the minimum scanning angle is as small as 8 degrees, which can realize scan most of the dental molds without cutting, and truly achieve no dead corner scanning.





The absolute accuracy was less than 10 $\mu$ m, and the standard deviation of repeatability was less than 2 $\mu$ m. In the pursuit of speed, we have never given up the insistence on precision.



### Impression scanning:

1. Single side impression
2. Both side impression
3. Single side impression+ single jaw plaster mold
4. Single side impression +abutment impression
5. Etc.



### Un-cutted mode scanning

1. Abutment
2. Crown repair
3. Implant
4. Orthodontic design
5. Partial design
6. Etc.



### Cutted mode scanning:

1. Multi-die with 8 tooth in one shot
2. Standard articulator scanning
3. Full arch scanning by handled
4. Etc.

# Specification List

Type	QScan	Scanning technology	Non-contact blue light scanning
Camera	2*1.3MP	Operating environment	10°C~30°C
Scanning accuracy	<10um	Size	310*470*310mm
Scanning time	Jaw 6s	Weight	5kg
	Upper / lower jaw 9s	Output format	STL
	1 ~ 8 teeth 13s	Connection method	USB 3.0
	Impression 50s	Power	DC 24V
Scan range	100*100*75mm	design software	EXOCAD
Warranty	1 year warranty, free lifetime software upgrades;		

# Recommend Configuration For Commputer

## Personal Computer

recommend specialist	
ITEM	MODEL
CPU	Intel i7-9700F
MAINBOARD	Z390
DDR	DDR4 2666 16GB(8G×2)
HDD	Seagate 2TB 256MB 7200RPM
SSD	TOSHIBA 240GB SSD SATA3.0 TR200
GRAPHIC CARD	GeForce GTX 1660
POWER	550W
minimal specialist	
ITEM	MODEL
CPU	Intel i5-8600
MAINBOARD	B360
DDR	DDR4 2666 8GB
HDD	Seagate 2TB 256MB 7200RPM
GRAPHIC CARD	GeForce GTX 1050Ti
POWER	500W

## Laptop

recommend specialist	
ITEM	MODEL
CPU	Intel i7-9750H
DDR	DDR4 2666 16GB
HDD	2TB 256MB 7200RPM
SSD	240GB SSD SATA3.0 TR200
GRAPHIC CARD	GeForce GTX 1660
minimal specialist	
ITEM	MODEL
CPU	Intel i5-9400H
DDR	DDR4 2666 8GB
HDD	2TB 256MB 7200RPM
GRAPHIC CARD	GeForce GTX 1050Ti